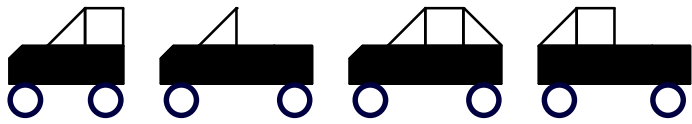
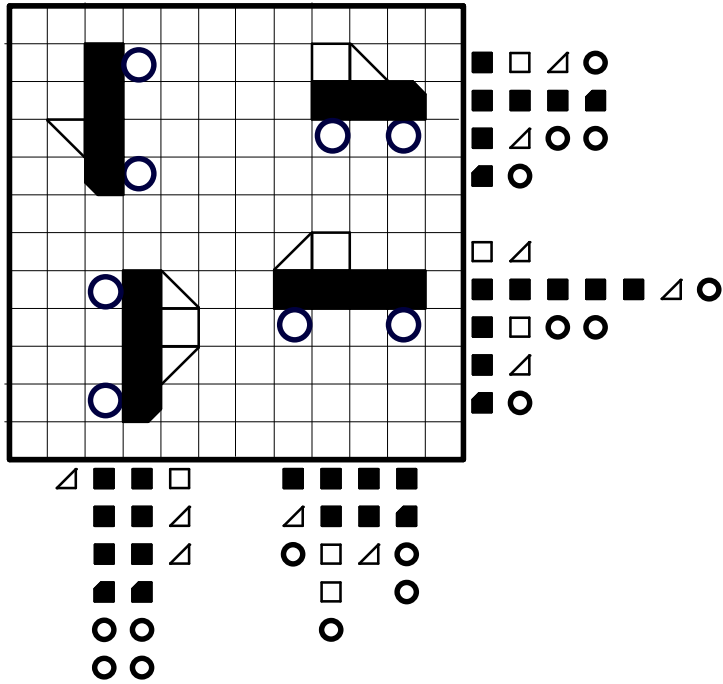


Diese Fahrzeuge müssen gesucht werden

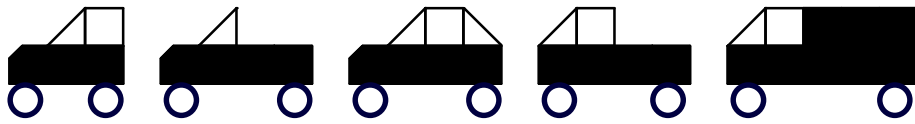


Bauteile ■ ■ ■ ■ □ □ △ △ ○ ○

Lösung 101

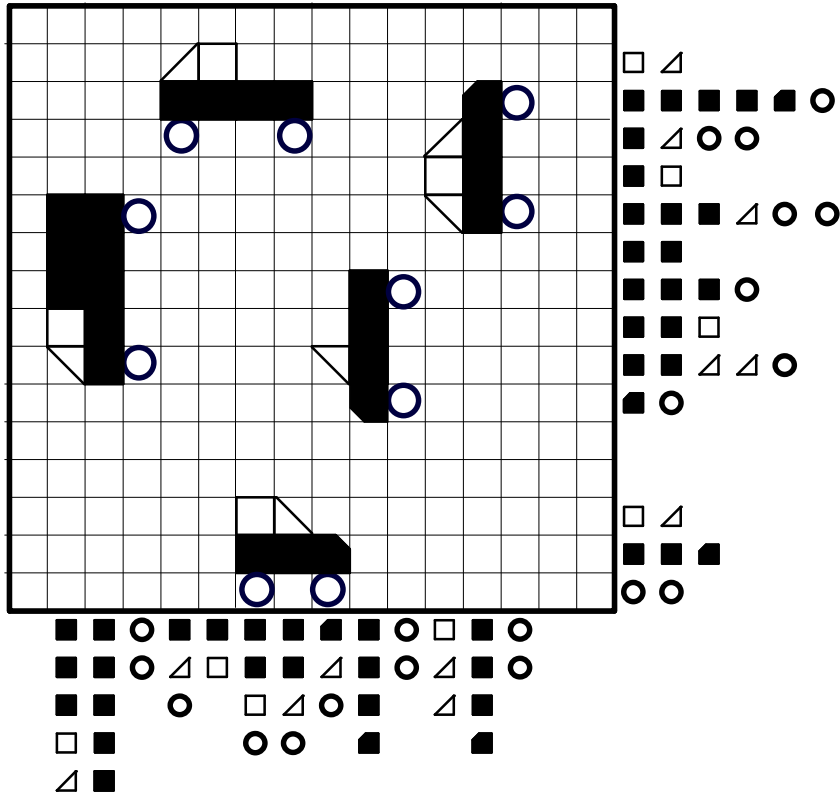


Diese Fahrzeuge müssen gesucht werden

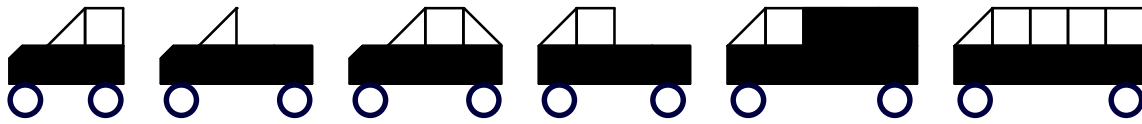


Bauteile ■ ■ ▣ ▤ ◯ ◯

Lösung 201

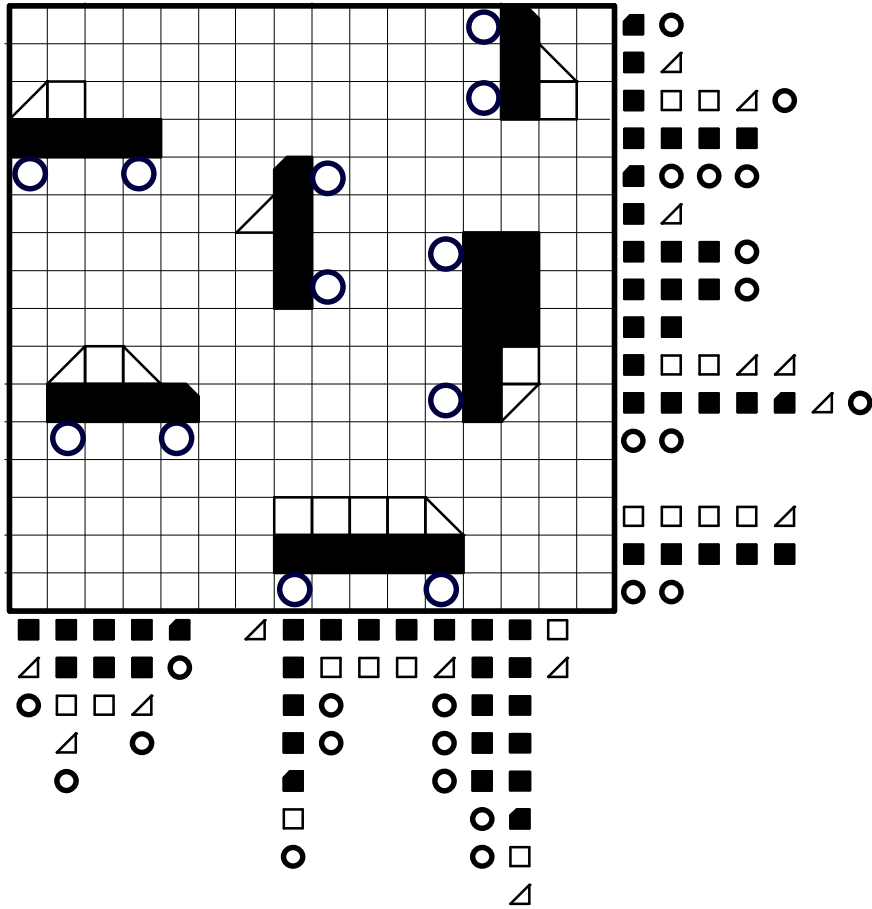


Diese Fahrzeuge müssen gesucht werden

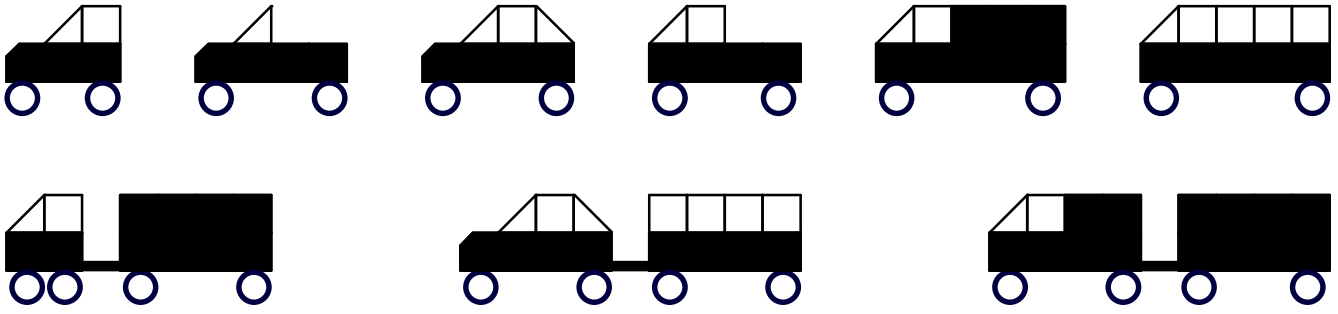


Bauteile ■ ■ ■ ■ □ □ △ △ ○ ○

Lösung 301



Diese Fahrzeuge müssen gesucht werden



Bauteile

Lösung 601

The puzzle consists of a 20x20 grid. The solution key on the right and bottom uses the following symbols to indicate the presence of parts:

- White square: Body part
- White triangle: Roof part
- White circle: Wheel
- White dash: Axle
- Solid black square: Body part
- Solid black square with a white triangle: Roof part
- Solid black circle: Wheel
- Solid black dash: Axle

 The grid shows several vehicles placed in various orientations (upside down, rotated 90 degrees, etc.). The solution key on the right lists the parts for each vehicle, and the key at the bottom shows the parts for the vehicles in the grid.

